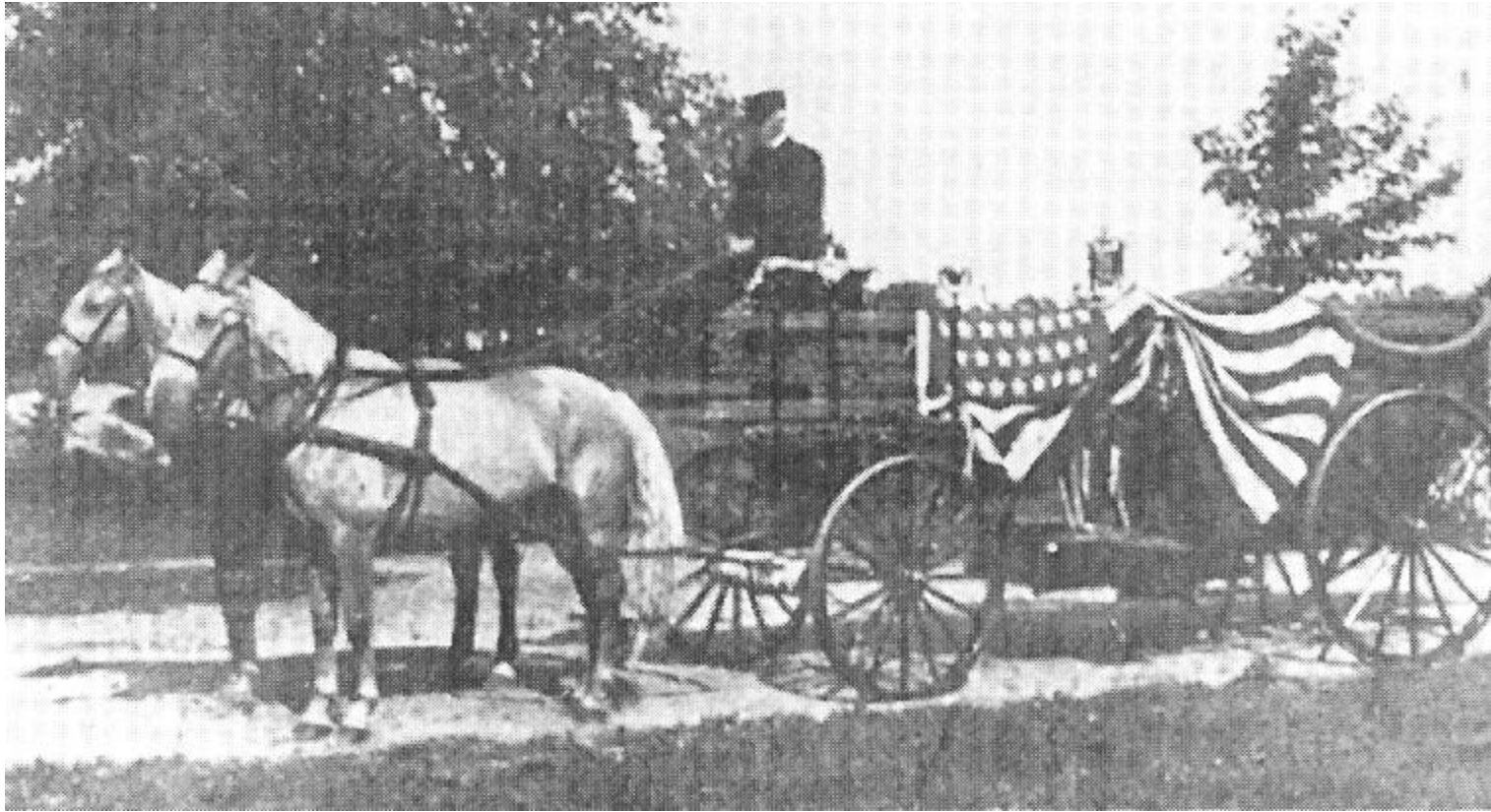
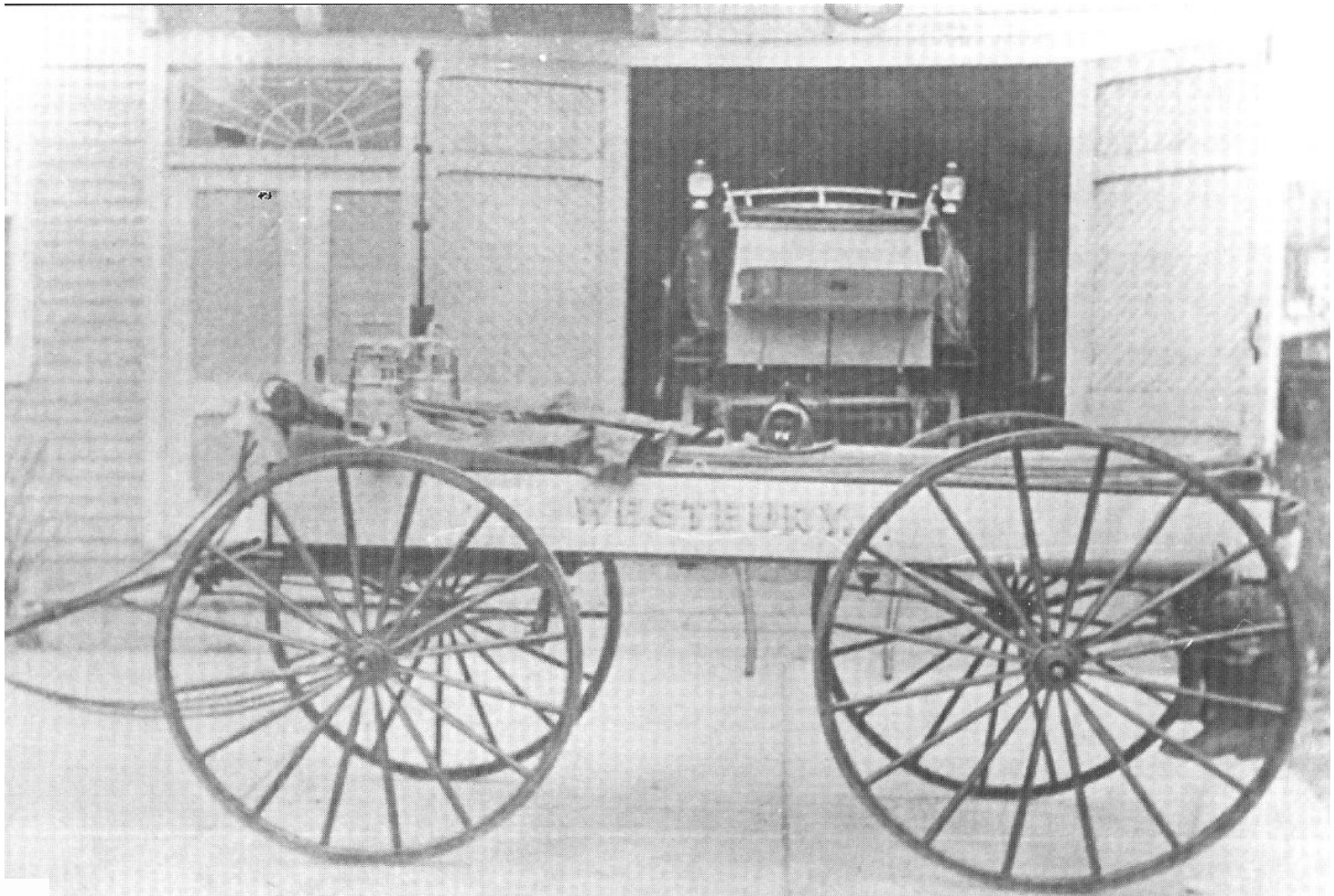




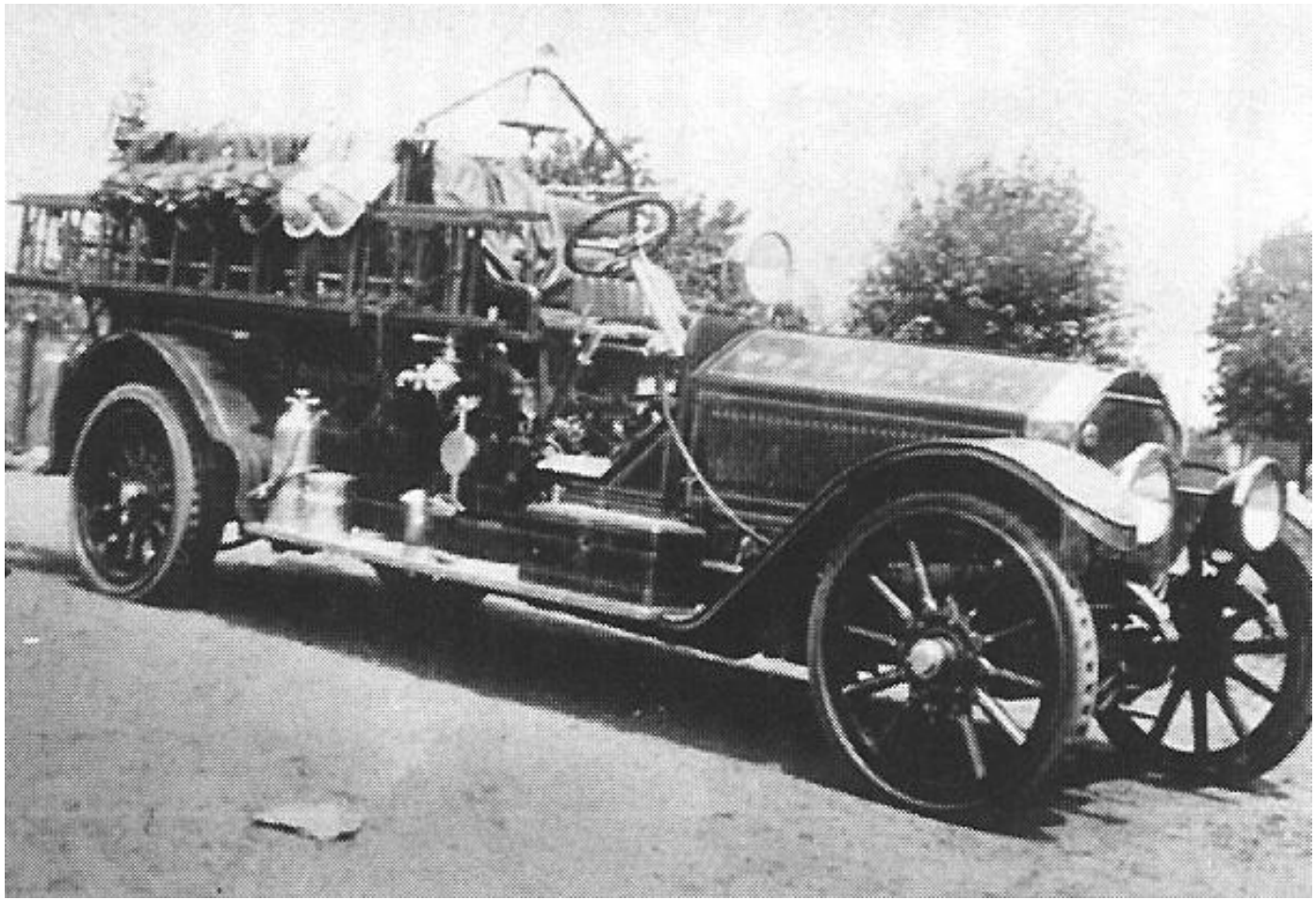
Westbury FD – Apparatus through the Years



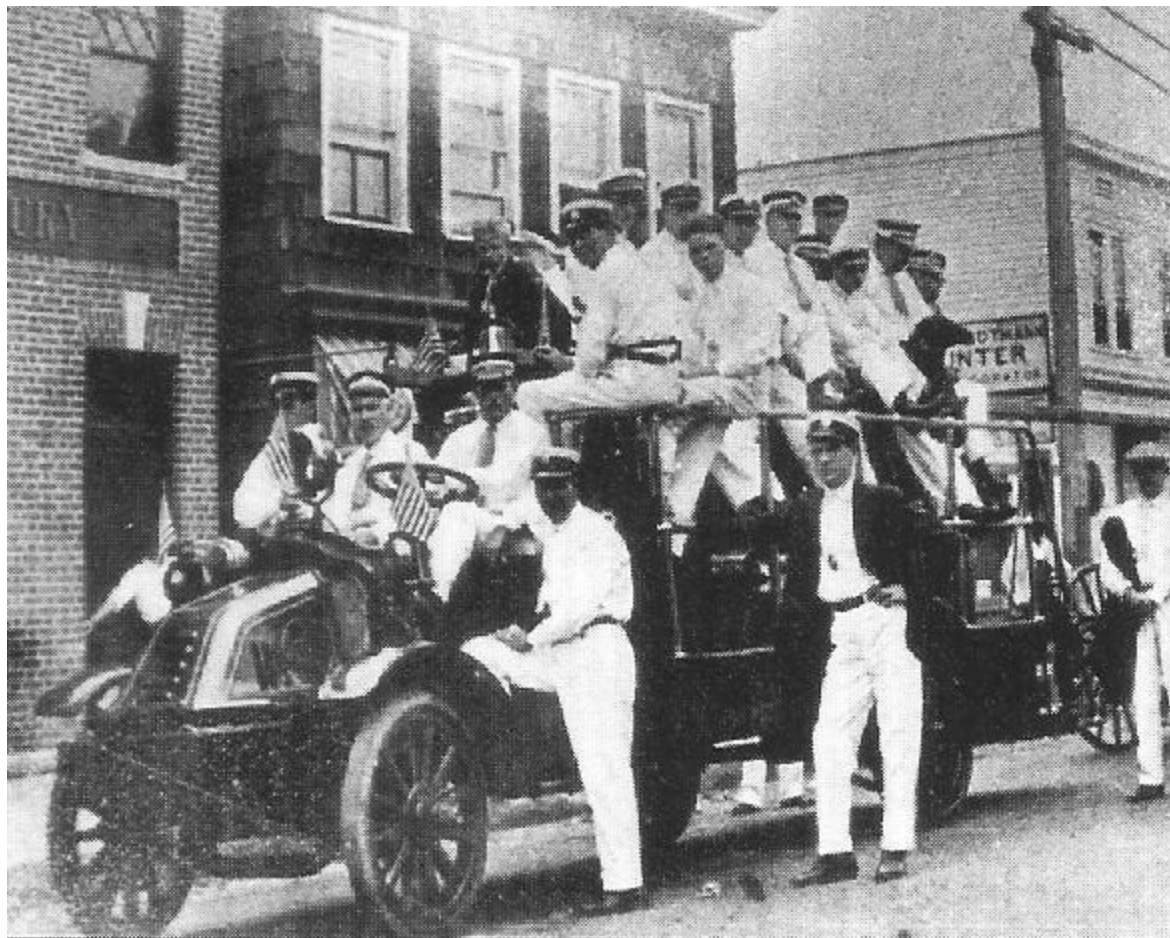
The original apparatus purchased in 1897



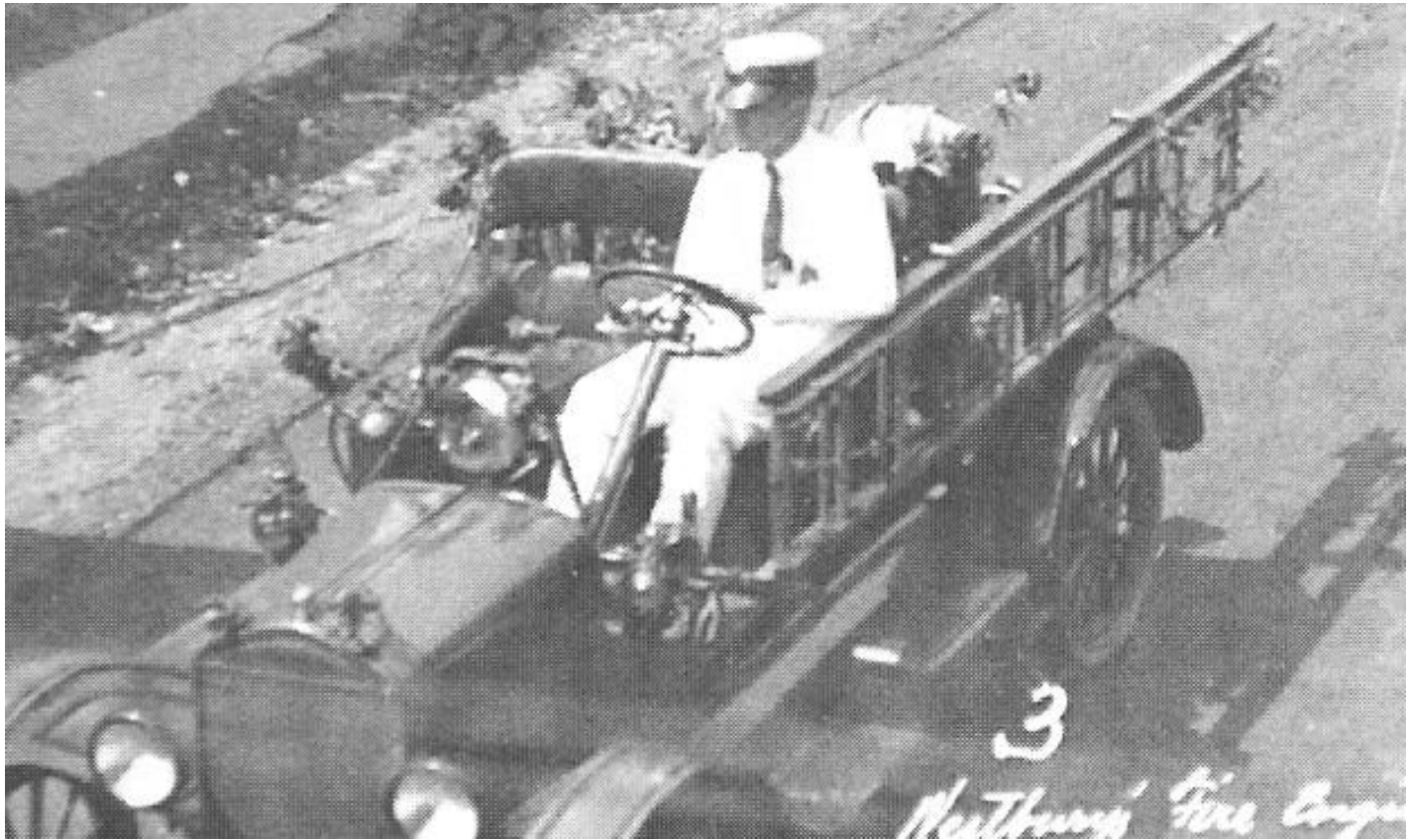
The racing hose wagon of Hose Company #1, built by Conrad Christ in 1913



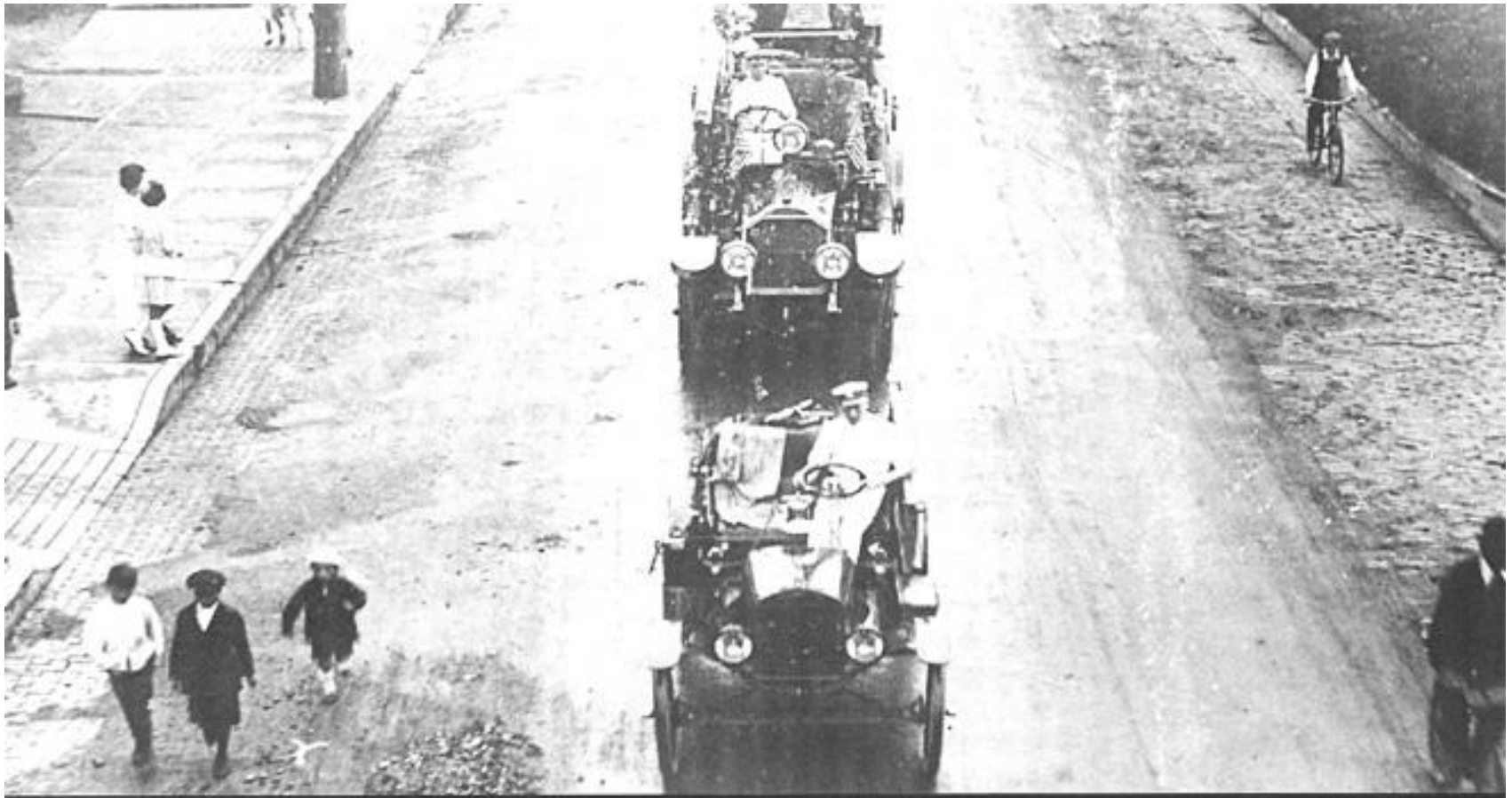
The American LaFrance 750-gpm pumper with a 91 gallon booster tank delivered to Hose 1 in December of 1917. Sold to Carle Place F.D. in 1948



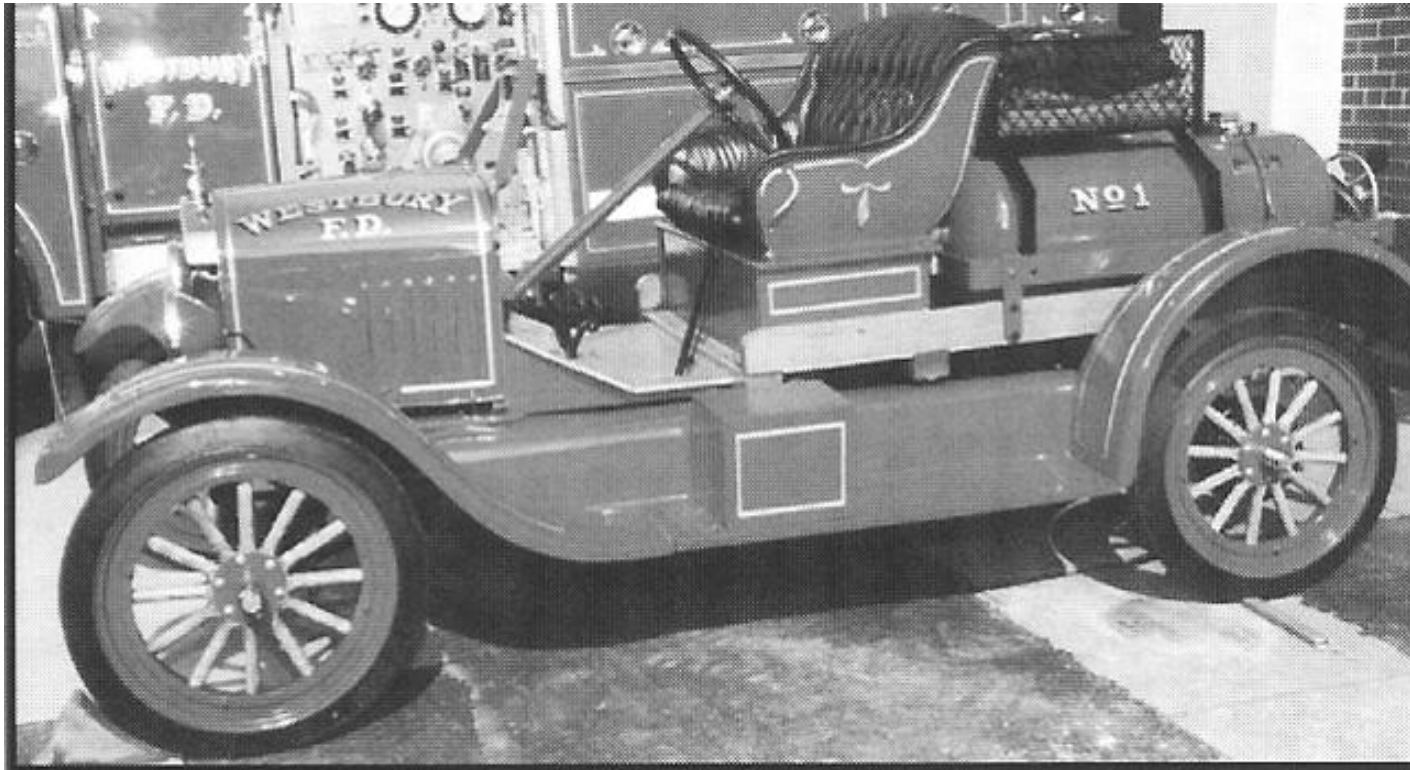
Members pose in front of the Kelly-Springfield truck before leaving for parade in Woodmere on July 24, 1918



The 1918 Ford Model-T chemical truck in a parade.



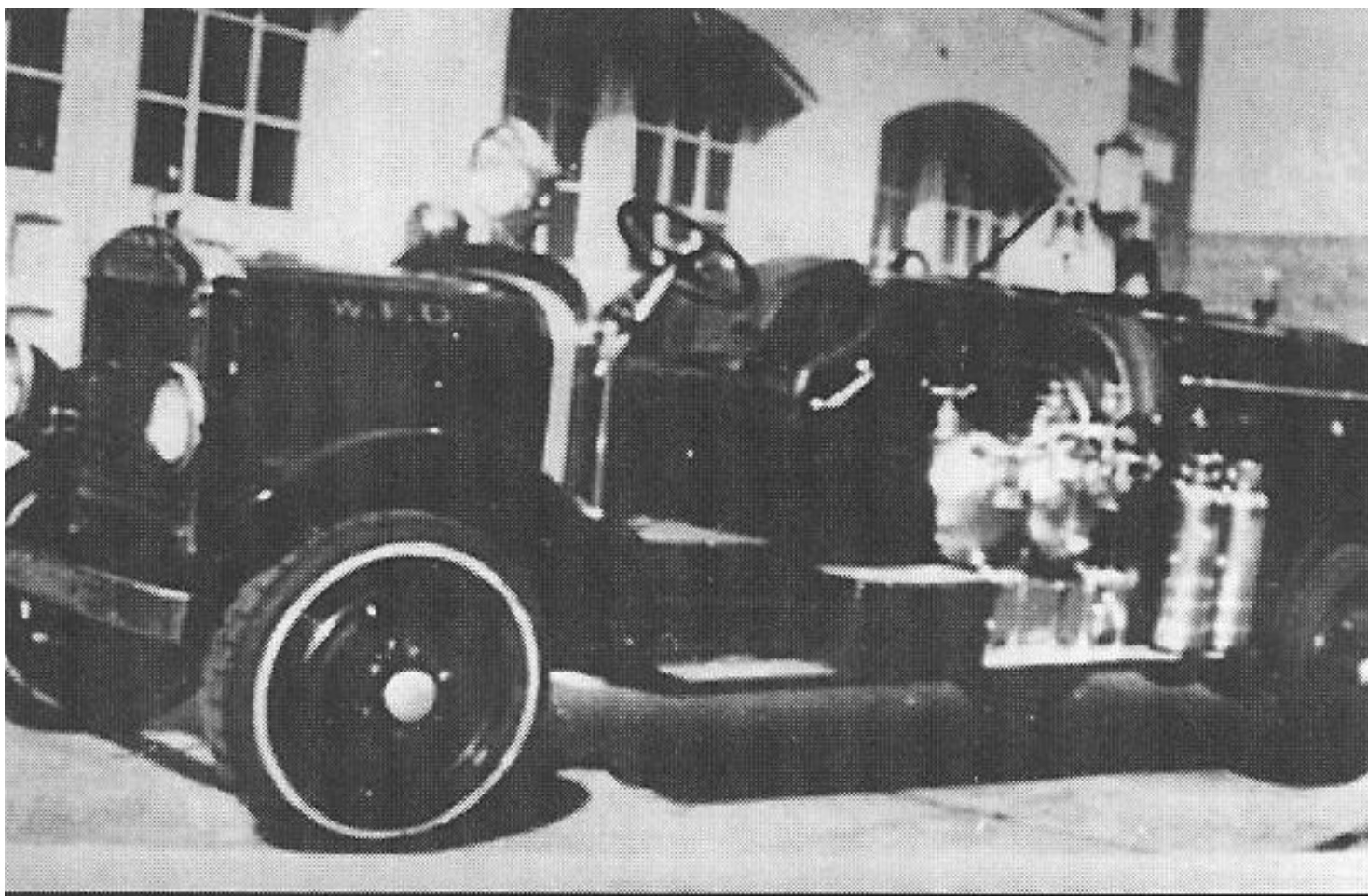
The department's apparatus - Ford Chemical, 750gpm American LaFrance pumper and Kelly Springfield Hook & Ladder truck, in the "Welcome Home" parade in 1919.



A 1923 Ford Model-T chemical truck,
refurnished for the 100th Anniversary



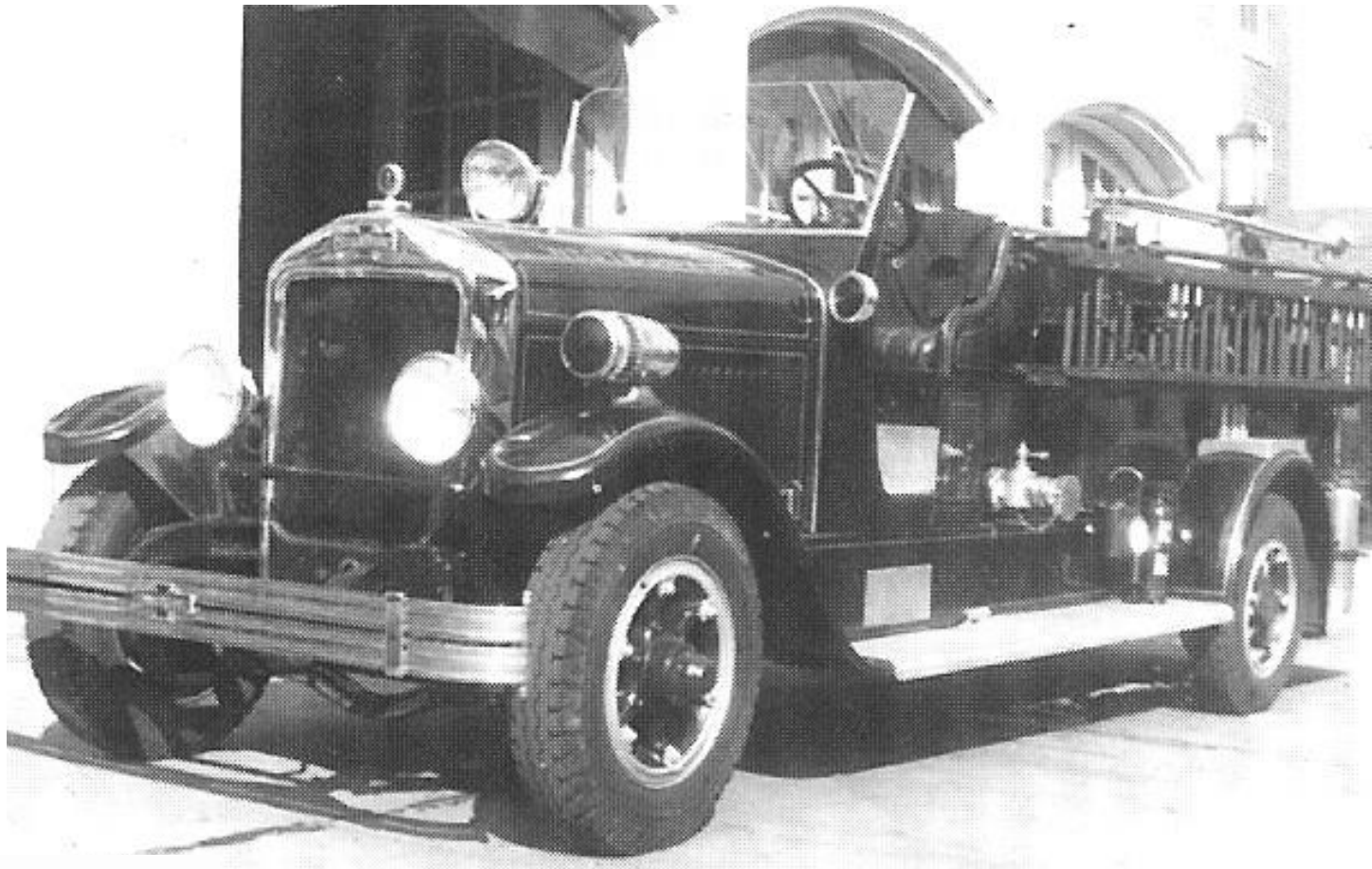
Members of Hose Company # 2 in 1923 pose in front of their first firehouse



The 1925 Reo Hose & Chemical Truck of Hose Co. # 2.



The 1926 American LaFrance Hook & Ladder in front of fire headquarters circa 1930



The 1935 12/600 American LaFrance pumper of Hose Co. 1
When this engine was retired, it was sold to the Beverly Hills,
Florida, Fire Department.



Another view of the 1935 12/600 American LaFrance pumper in the rear of fire headquarters.



Another view of the 1935 12/600 American LaFrance pumper in the rear of fire headquarters.



The department's apparatus on display in front of fire headquarters in 1947



The 1947 Chevrolet Pumper-Booster truck in the line of march during a parade circa 1950



1947 Mack Pumper



The 1948 Ford Booster - Brush truck in the rear of fire headquarters circa 1950



1958 Flood Light Truck



E290L103@aol.com

Photo Copyright 2001 Michael Martinelli
1982 American La France 1500/500
Westbury, New York Engine 965



1982 American La France



Photo Copyright 2001 Michael Martinelli
E290L103@aol.com 1988 Pemfab/American La France 1500/500/54'SQT
Westbury, New York Squire 966



1988 American La France

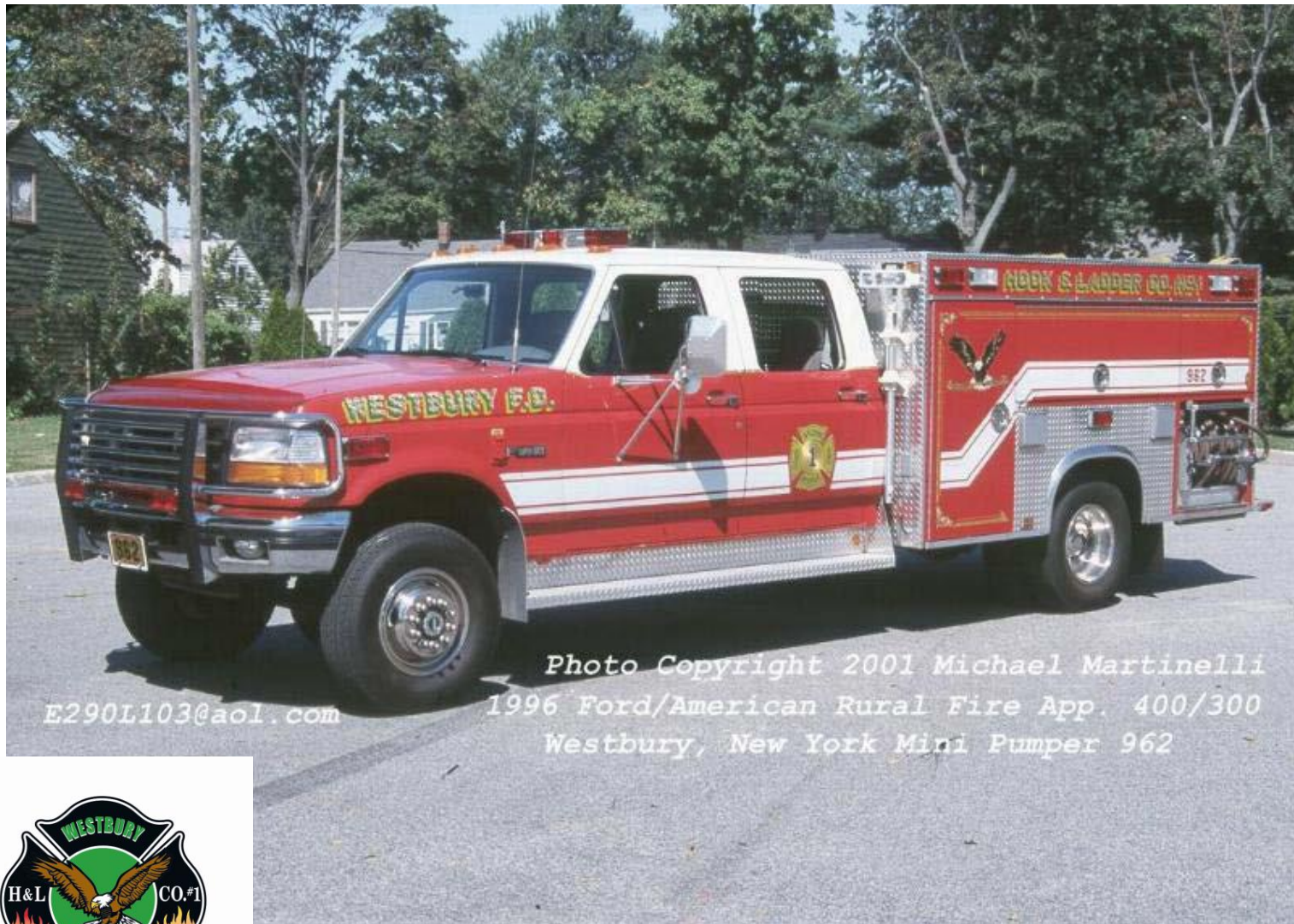


E290L103@aol.com

Photo Copyright 2001 Michael Martinelli
1984 Mack CF 1500/600
Last Complete Mack Fire Apparatus Built
Westbury, New York Engine 968



1984 Mack



1996 Ford



Photo Copyright 2001 Michael Martinelli
1979 Mack CF/Baker 1993 Baker Rehab
Ex-FDNY Ladder 54 75' Tower Ladder
Westbury, New York Ladder 969

E290L103@aol.com



1979 Mack